



HALTON MILL

INTERIOR DESIGN PROJECT

PRESENTATION: INITIAL IDEAS 15 FEBRUARY 2013

GREEN ELEPHANT AND UCLAN MA DESIGN STUDENTS





HALTON MILL: INTERIOR DESIGN PROJECT

PRESENTATION: INITIAL IDEAS 15 FEBRUARY 2013
GREEN ELEPHANT AND UCLAN MA DESIGN STUDENTS

INTRODUCTION

PROJECT GROUP

Steve Bennett, Course Leader MA Interior Design
Chen Zhao, MA Interior Design student
Alice Fulton, MA Interior Design student
Bonnie Craig, MA Surface Pattern student

CLIENT

Direct: Lancaster CoHousing/Green Elephant
Indirect: potential small businesses, freelancers and social enterprises that will rent studio space – creative industries including designers, craftspeople, performers, artists, writers, musicians

AIMS OF PROJECT GROUP

- » Create a visual identity that reflects Green Elephant's values, the mill's history and the building's function
- » Produce a set of interior design elements and styles that can be applied throughout the building as needed
- » Work up these ideas in the two main communal spaces in the mill
- » Consider potential uses for the various spaces inside the mill

AIMS OF HALTON MILL (FROM HALTONMILL.ORG.UK)

- » Offer a vibrant and inspiring environment in which small businesses, social enterprises, community-based organisations, artists, craftspeople, and freelancers can flourish
- » Minimise the environmental impact of our working activities and encourage the sharing of resources, skills, opportunities, ideas and facilities
- » Provide affordable managed workspace in offices, workshops and studios provide support and advice, networking opportunities and promote tenants' work
- » Encourage small local enterprises or individuals to take the next step from working at home

PROJECT PROCESS

1. Use initial client meeting, site visit, client website to develop visual identity and design concept.
2. Research, including:
 - » history of the mill
 - » examples of creative hubs
 - » examples of other industrial building conversions
 - » industrial-style interiors
 - » use for ceiling spaces and sculptures
 - » recycled, upcycled, reused furniture and interiors
 - » recycled, upcycled, reused materials.
3. Evaluate research and agree development ideas
4. Produce initial sketches and designs
5. Evaluate initial ideas
6. Produce 3d digital sketches
7. Present to client

DESIGN CONCEPT

- » Ecological and environmentally friendly values of Green Elephant and Lancaster Cohousing
- » Ethical business
- » Industrial style reflecting the 270-year factory history of the mill
- » Inspirational environment encouraging collaboration and ideas
- » Sharing and co-operation – open and inclusive
- » Limited budget - recycling and reusing wherever possible
- » 'Take the next step from working at home' – inviting, friendly, cosy, comfortable





HALTON MILL: INTERIOR DESIGN PROJECT

PRESENTATION: INITIAL IDEAS 15 FEBRUARY 2013
GREEN ELEPHANT AND UCLAN MA DESIGN STUDENTS

INITIAL RESEARCH IMAGES



Byron restaurant, London
Industrial style



Byron restaurant, London
Industrial style



C/o Gallery, Berlin
Industrial style



C/o Gallery, Berlin
Industrial style



The Parlour Dinners, Berlin
Industrial style



Findelkind whisk lights
Upcycled design (DIY instructions:
<http://bit.ly/MEglnE>)



Street art in Paris
Copper pan upcycled sculpture



Maurizio Cattelan sculpture
Reused object hanging sculpture



Emily Wettstein table
Green/living furniture





HALTON MILL: INTERIOR DESIGN PROJECT

PRESENTATION: INITIAL IDEAS 15 FEBRUARY 2013
GREEN ELEPHANT AND UCLAN MA DESIGN STUDENTS



Reclaimed wood
Baker Furniture



Bluebone furniture
'Restoration vintage'



Costume, Birmingham Museum
Effect to create with crushed glass



Upcycled lighting
GP Light & More



Upcycled lighting
Oliver Hrubciak Design



Green/living lights installation
Plumen



Green/living lights
Plumen



Reclaimed wood
Baker Furniture





HALTON MILL: INTERIOR DESIGN PROJECT

PRESENTATION: INITIAL IDEAS 15 FEBRUARY 2013
GREEN ELEPHANT AND UCLAN MA DESIGN STUDENTS

RECEPTION

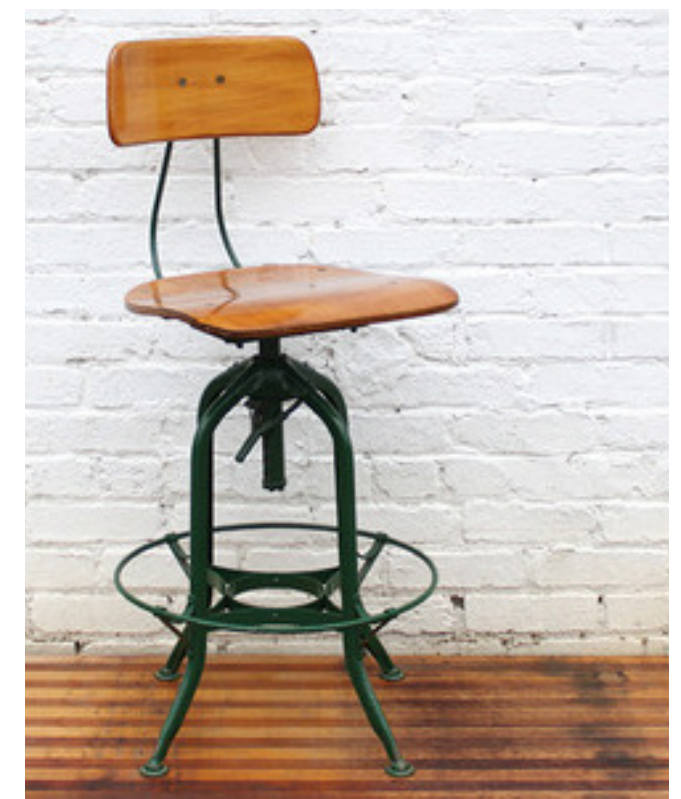
FUNCTION

- » Flagship for Green Elephant and its values
- » Meeting and greeting – first point of contact with clients/the public
- » Bookings, admin/upkeep/sales related to studio hire, ticketing for events
- » Waiting area for clients
- » Display promotional materials
- » Display information about the historical context of the mill
- » Potentially umbrella reception service for tenants



STYLE

- » Recycled, reused, upcycled materials
- » Option 1: Industrial eco studio
References to the mill's history in industrial design
- » Option 2: Creative lounge
Cosy, welcoming homely feel
- » References to the mill's history in industrial design





HALTON MILL: INTERIOR DESIGN PROJECT

PRESENTATION: INITIAL IDEAS 15 FEBRUARY 2013
GREEN ELEPHANT AND UCLAN MA DESIGN STUDENTS

RECEPTION

RECEPTION DESK

- » Visitors' first view when they enter
- » Striking design made from reclaimed/recycled materials
- » In front of wall with space for name and strapline ('Take the next step from working at home?')
- » Professional but approachable first impression

LIGHTING

- » Matching style and colours of room
- » Option 1: warm, colourful, cozy
- » Option 2: industrial, light, clean
- » Industrial tube lighting
- » Industrial, mechanical style floor lamps
- » Hanging ceiling lights for spotlights
- » Feature desk lamp

SEATING AREA

- » Sofa and chair made from pallets
- » Low table made from cable reel
- » Cushions from industrial mill print
- » Draughtsman stools
- » Computers for drop-in use

FLOORING

- » Rug made from recycled sweaters adds a warm homely feel
- » Tiles – slate grey with rust undertones
- » Wood – recycled pallets

STORAGE

- » Wall-mounted recycled crates

CURTAIN

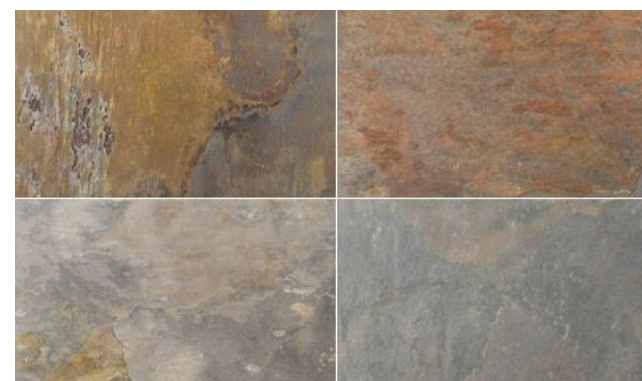
- » Over doorway to hub area
- » Adds cosy, domestic feel and protects from draughts
- » Heavy fabric in industrial mill print

DISPLAY

- » Recycled crates to display artefacts showing history of the mill
- » Drawing boards to display promotional info

STORAGE

- » Stretched fabric in industrial mill print

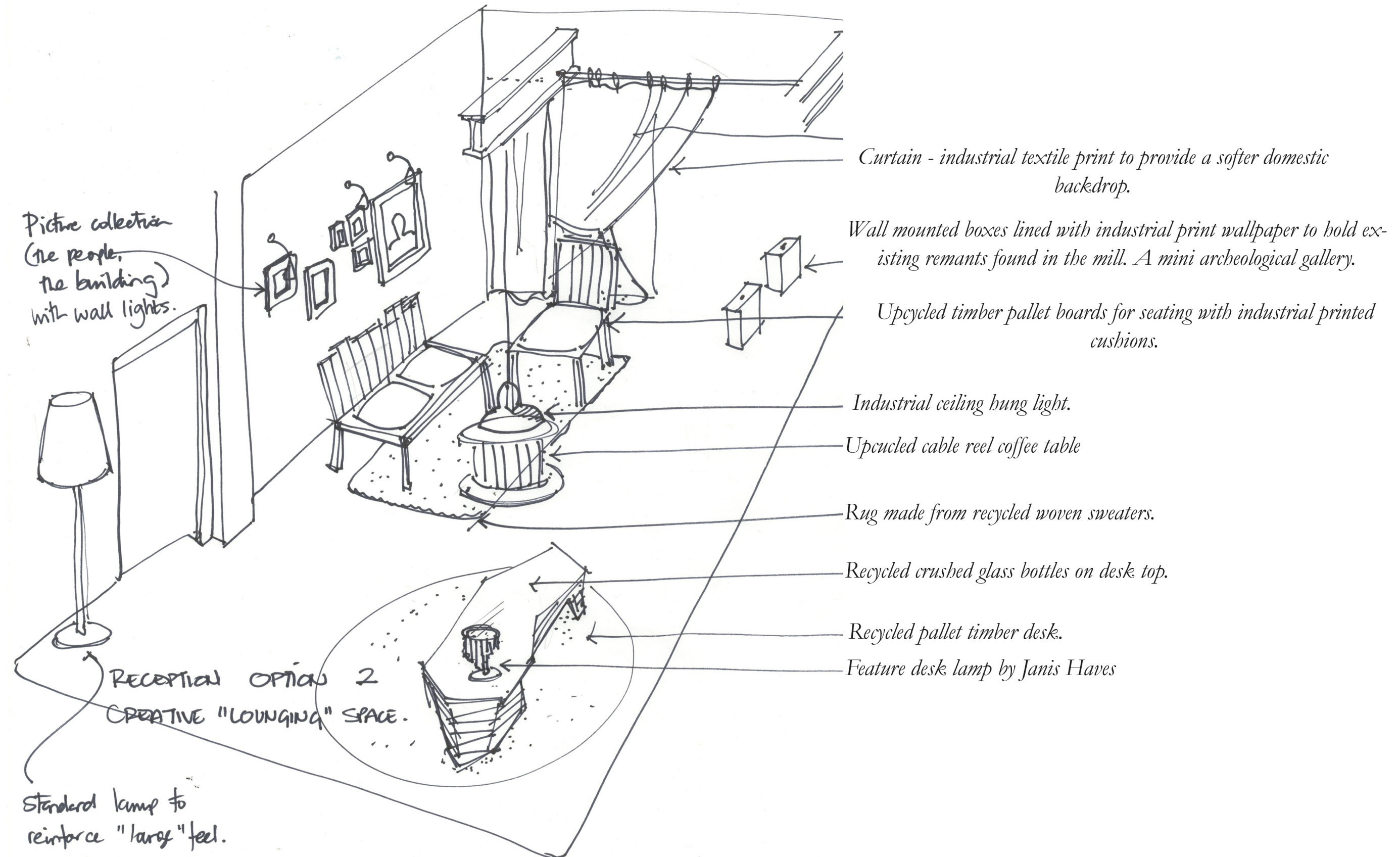




HALTON MILL: INTERIOR DESIGN PROJECT

PRESENTATION: INITIAL IDEAS 15 FEBRUARY 2013
GREEN ELEPHANT AND UCLAN MA DESIGN STUDENTS

RECEPTION: INITIAL SKETCHES

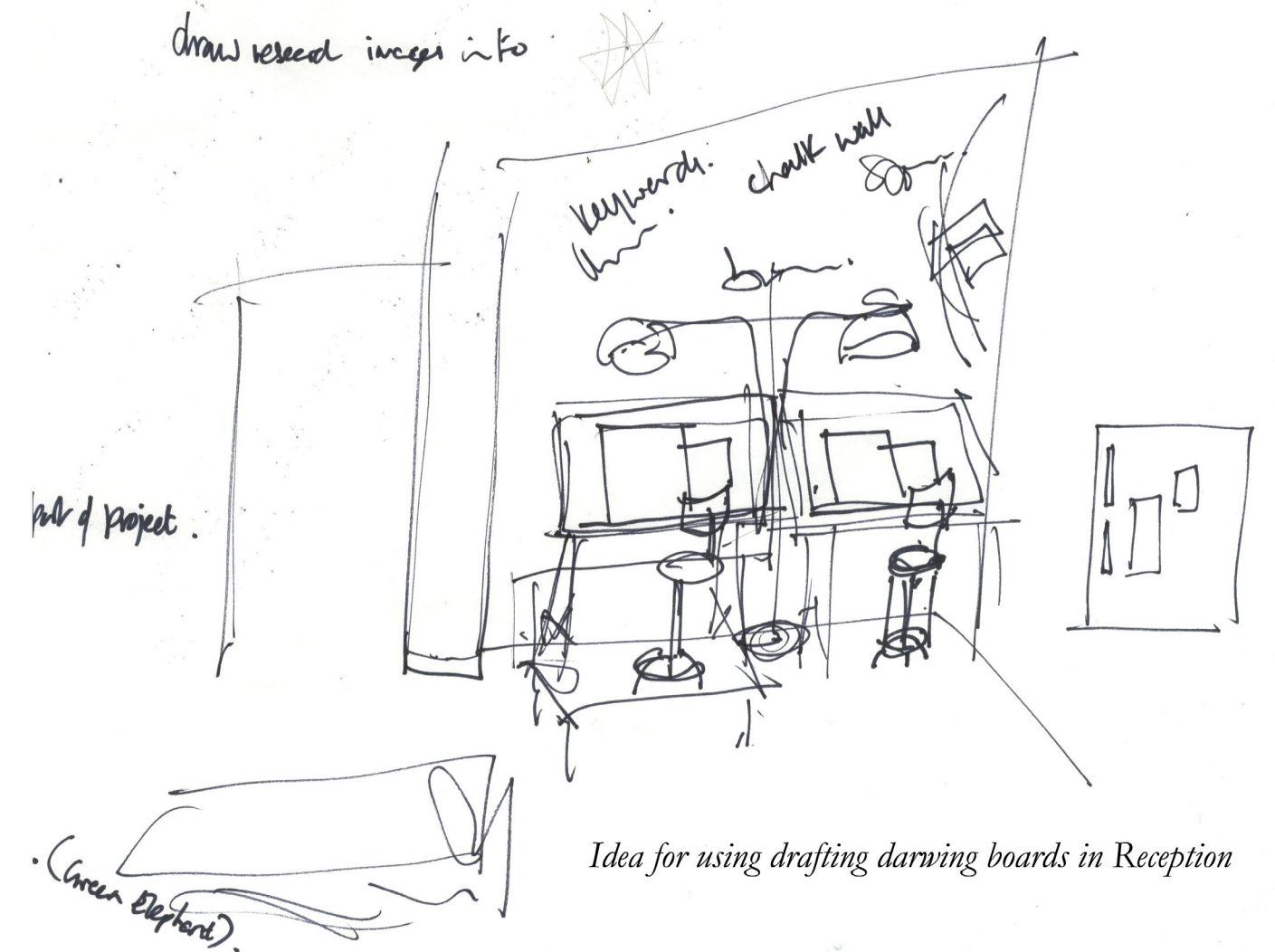
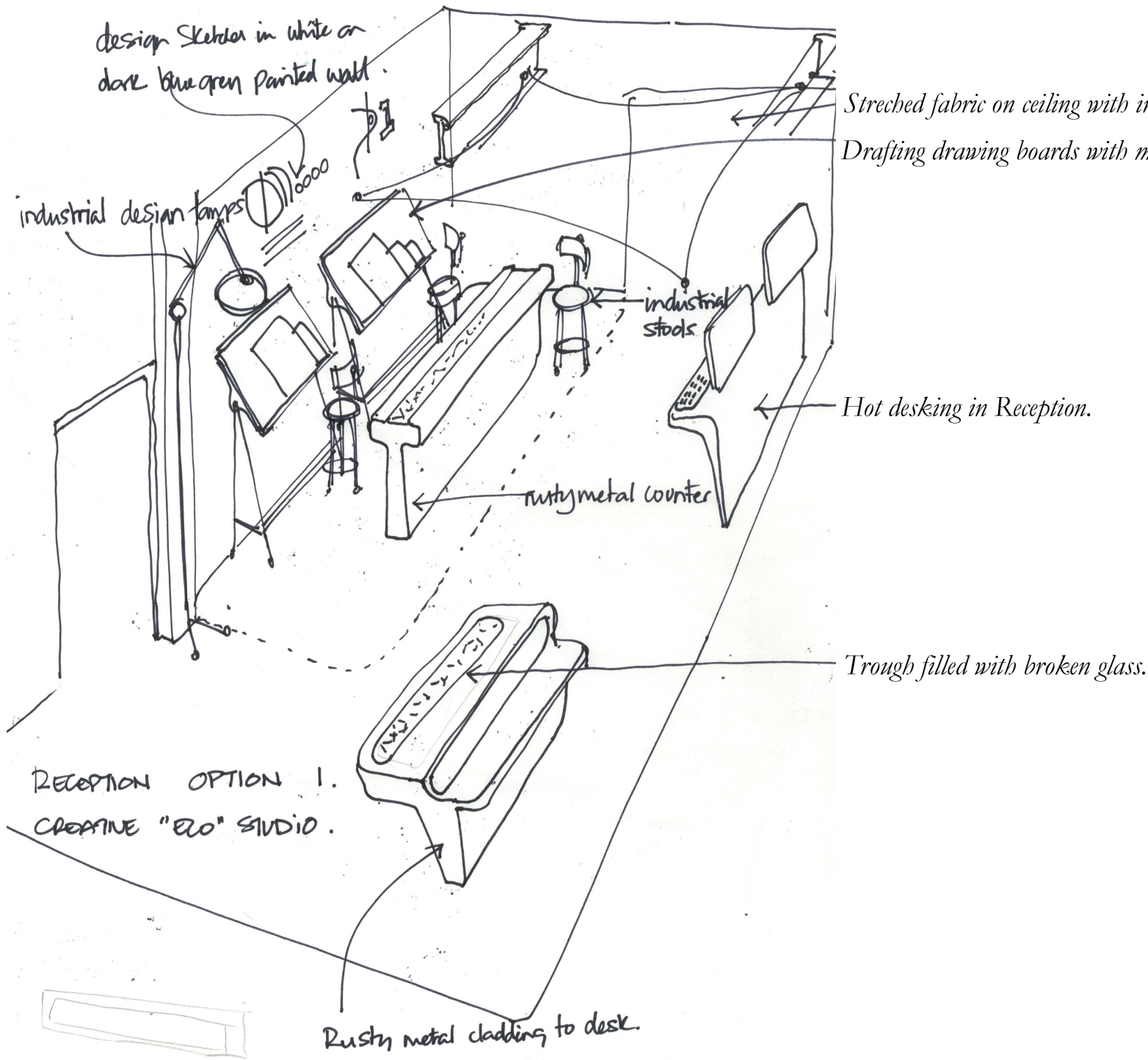




HALTON MILL: INTERIOR DESIGN PROJECT

PRESENTATION: INITIAL IDEAS 15 FEBRUARY 2013
GREEN ELEPHANT AND UCLAN MA DESIGN STUDENTS

RECEPTION: INITIAL SKETCHES





HALTON MILL: INTERIOR DESIGN PROJECT

PRESENTATION: INITIAL IDEAS 15 FEBRUARY 2013
GREEN ELEPHANT AND UCLAN MA DESIGN STUDENTS

RECEPTION: WORKED UP SKETCHES

RECEPTION

Option 2

Creative Lounge

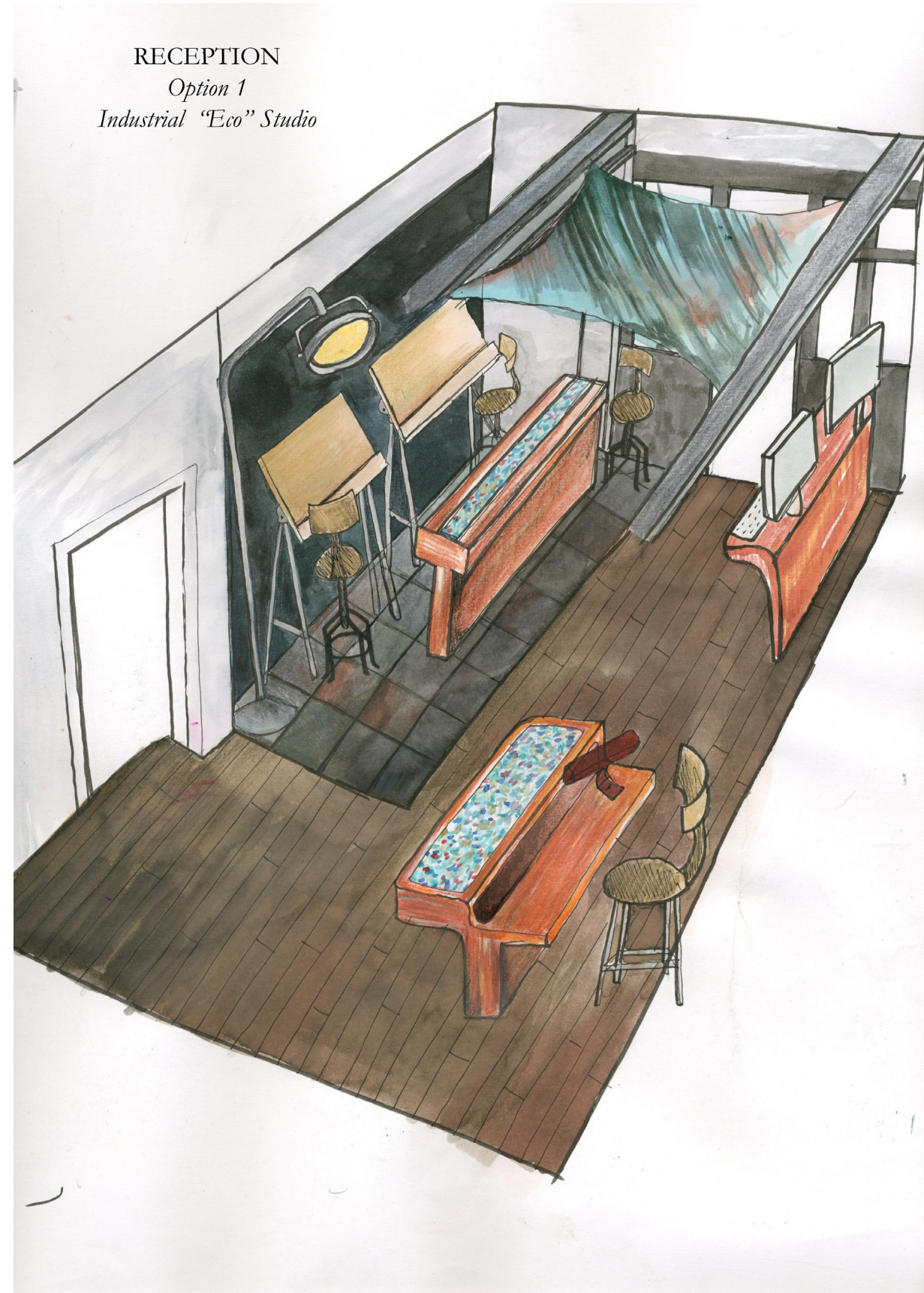
*"home from home" - comfortable, welcoming
and friendly for the visitor.*



RECEPTION

Option 1

Industrial "Eco" Studio





HALTON MILL: INTERIOR DESIGN PROJECT

PRESENTATION: INITIAL IDEAS 15 FEBRUARY 2013
GREEN ELEPHANT AND UCLAN MA DESIGN STUDENTS

RECEPTION: 3D IMAGE





HALTON MILL: INTERIOR DESIGN PROJECT

PRESENTATION: INITIAL IDEAS 15 FEBRUARY 2013
GREEN ELEPHANT AND UCLAN MA DESIGN STUDENTS

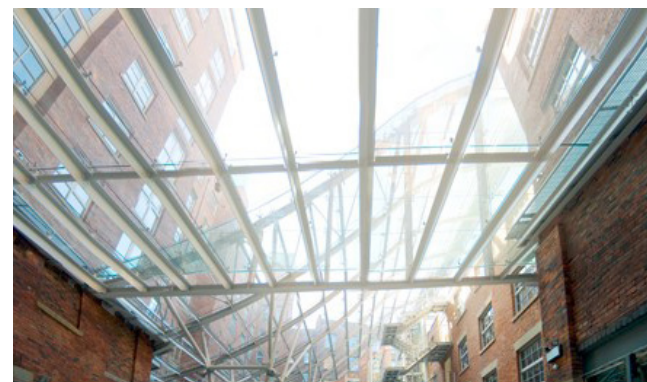
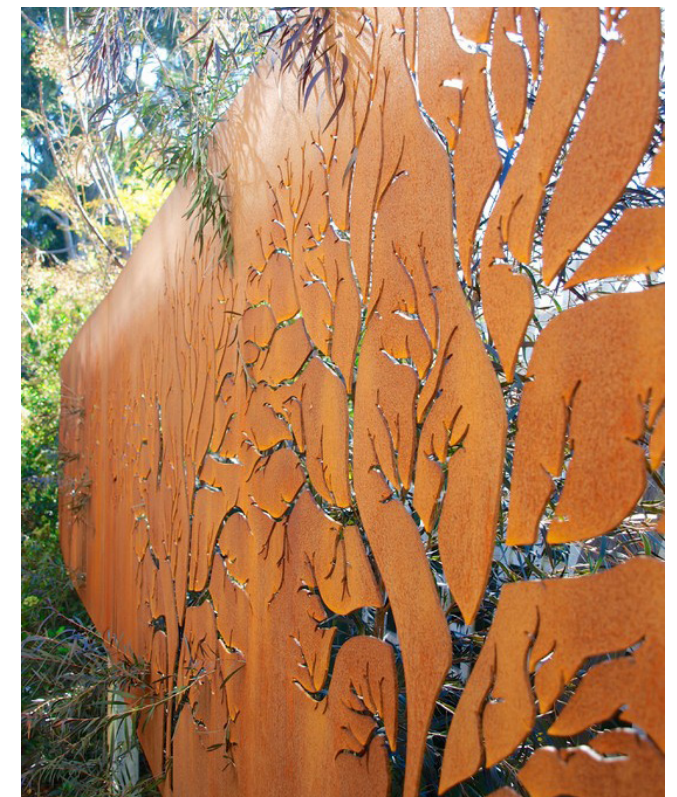
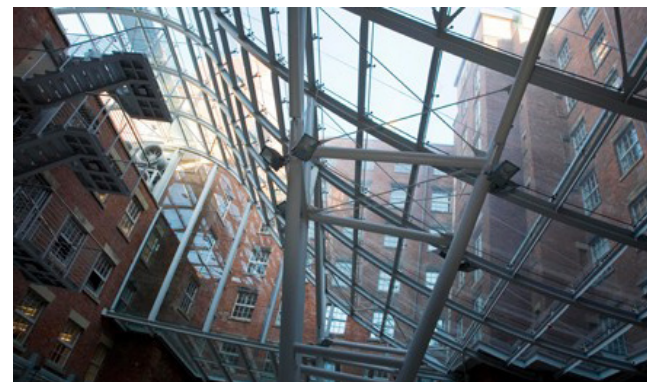
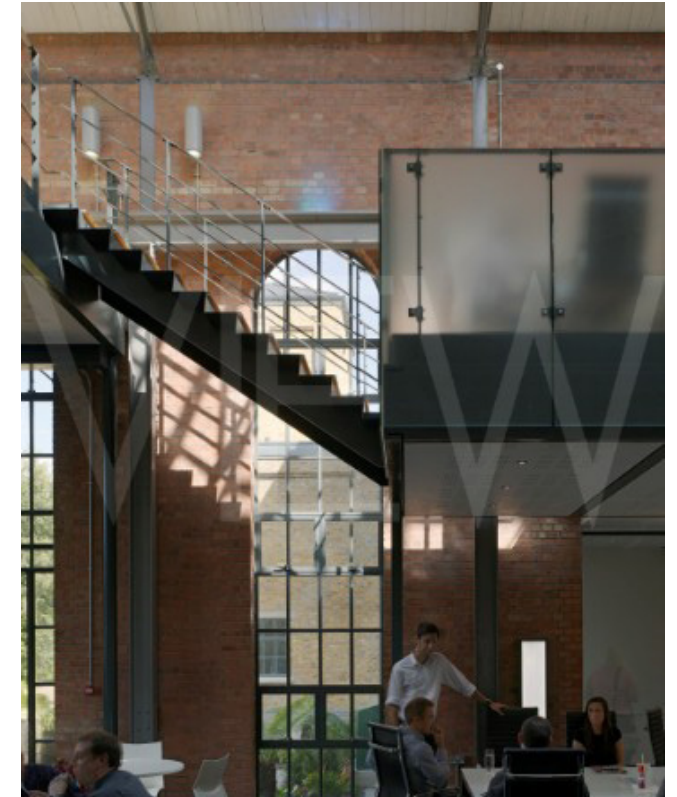
THE HUB

FUNCTION

- » Creative multifunctional space that can be used for:
 - » meetings
 - » gallery/display
 - » music/drama performances
 - » common-room
 - » collaborative ideas
- » A space for creative people and their ideas to meet and grow.

STYLE

- » Recycled, reused, upcycled materials
- » Industrial - reference to the mill's history
- » Neutral colourways to optimise possible uses
- » Multifunctional furniture





HALTON MILL: INTERIOR DESIGN PROJECT

PRESENTATION: INITIAL IDEAS 15 FEBRUARY 2013
GREEN ELEPHANT AND UCLAN MA DESIGN STUDENTS

THE HUB

BENCHES

- » Stored in the floor – can be removed and arranged for meetings and performance

CHAIRS

- » Reclaimed pallets with cushions for casual seating

SCREENS

- » Room dividers to enable several simultaneous meetings/events

SUSPENDED CEILING GRID

- » Enables artworks to be hung and removed as needed
- » Hang meeting/presentation materials
- » Add projector and screen to use space as cinema
- » Add roller blinds to create screens

STAIRS

- » Enabling indoor access to upper level of mill directly from reception
- » Lead to extra seating area on second level
- » Lift for accessibility and transporting heavy materials

LIGHTING

- » Lighting
- » Natural light from roof windows
- » Spotlights attached to hanging grid – lights artworks and room space
- » Potential to add spotlights that light up the roof space

UPSTAIRS AREA

- » More private, intimate meeting space
- » Near to studios for tenants to use as area to take a break
- » Display area for who's who and map of studios – each tenant has a display box to represent them and their work





HALTON MILL: INTERIOR DESIGN PROJECT

PRESENTATION: INITIAL IDEAS 15 FEBRUARY 2013
GREEN ELEPHANT AND UCLAN MA DESIGN STUDENTS

THE HUB USED AS GALLERY: 3D IMAGE





HALTON MILL: INTERIOR DESIGN PROJECT

PRESENTATION: INITIAL IDEAS 15 FEBRUARY 2013
GREEN ELEPHANT AND UCLAN MA DESIGN STUDENTS

THE HUB USED AS PERFORMANCE SPACE: 3D IMAGE

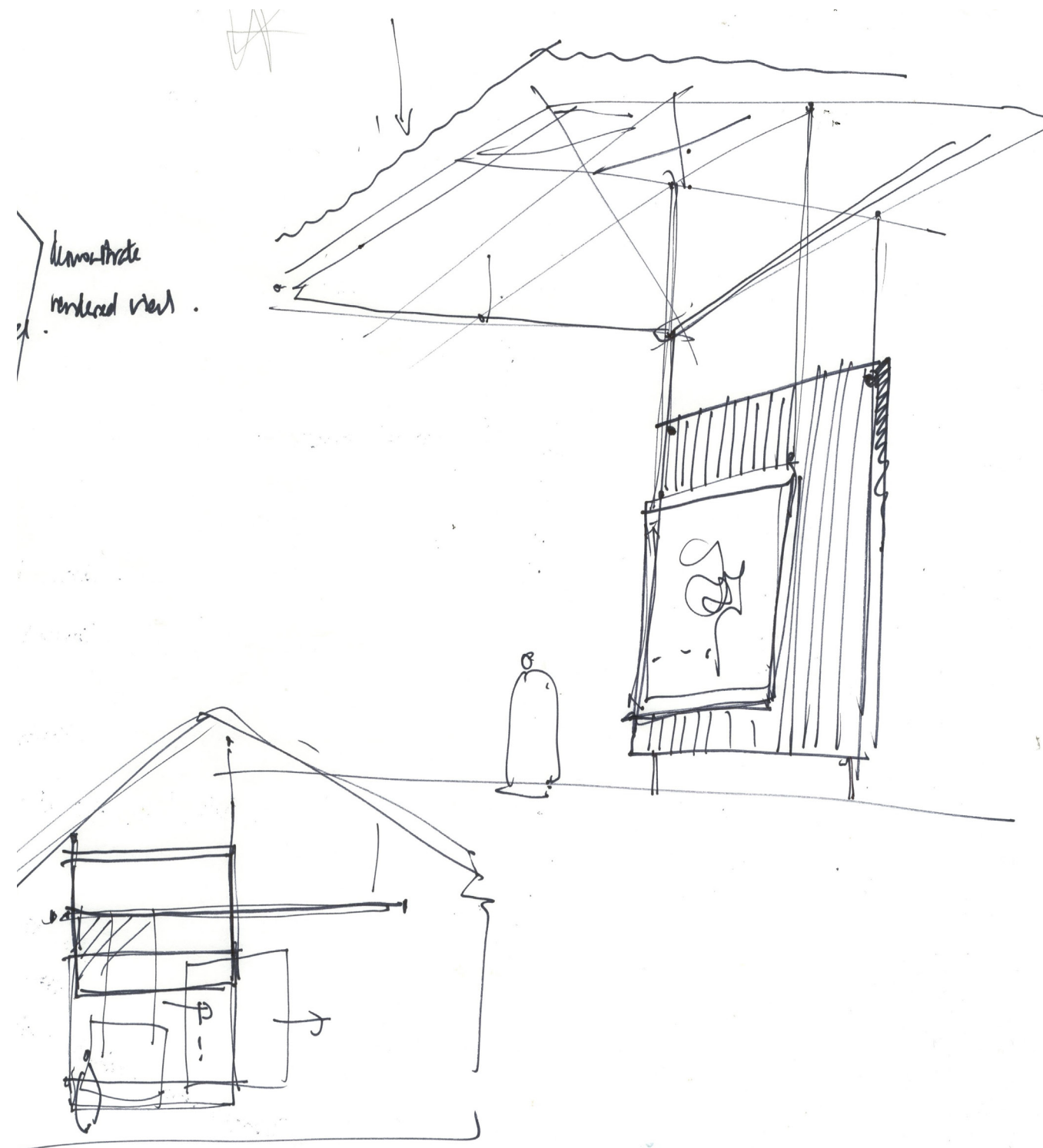




HALTON MILL: INTERIOR DESIGN PROJECT

PRESENTATION: INITIAL IDEAS 15 FEBRUARY 2013
GREEN ELEPHANT AND UCLAN MA DESIGN STUDENTS

THE HUB: SKETCH OF GALLERY HANGING MECHANISM





HALTON MILL: INTERIOR DESIGN PROJECT

PRESENTATION: INITIAL IDEAS 15 FEBRUARY 2013
GREEN ELEPHANT AND UCLAN MA DESIGN STUDENTS

KITCHEN/CAFE

FUNCTION

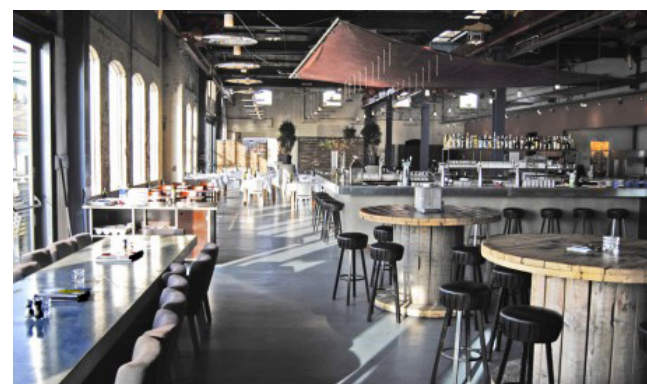
- » Food/drink/kitchen area for tenants
- » Income generator – café/tearoom for the public – walkers, cyclists and local residents
- » Raise the profile of the mill within local community
- » Creative meeting space for tenants' clients and local businesses

STYLE

- » Amalgamation of both industrial and domestic styles of reception
- » Reused, recycled materials
- » Victorian teahouse style with a modern feel

FURNISHINGS

- » Reclaimed furniture and materials
- » Pallets and cable reels
- » Chalkboards for collaborative ideas, noticeboard
- » Communal benches and private tables

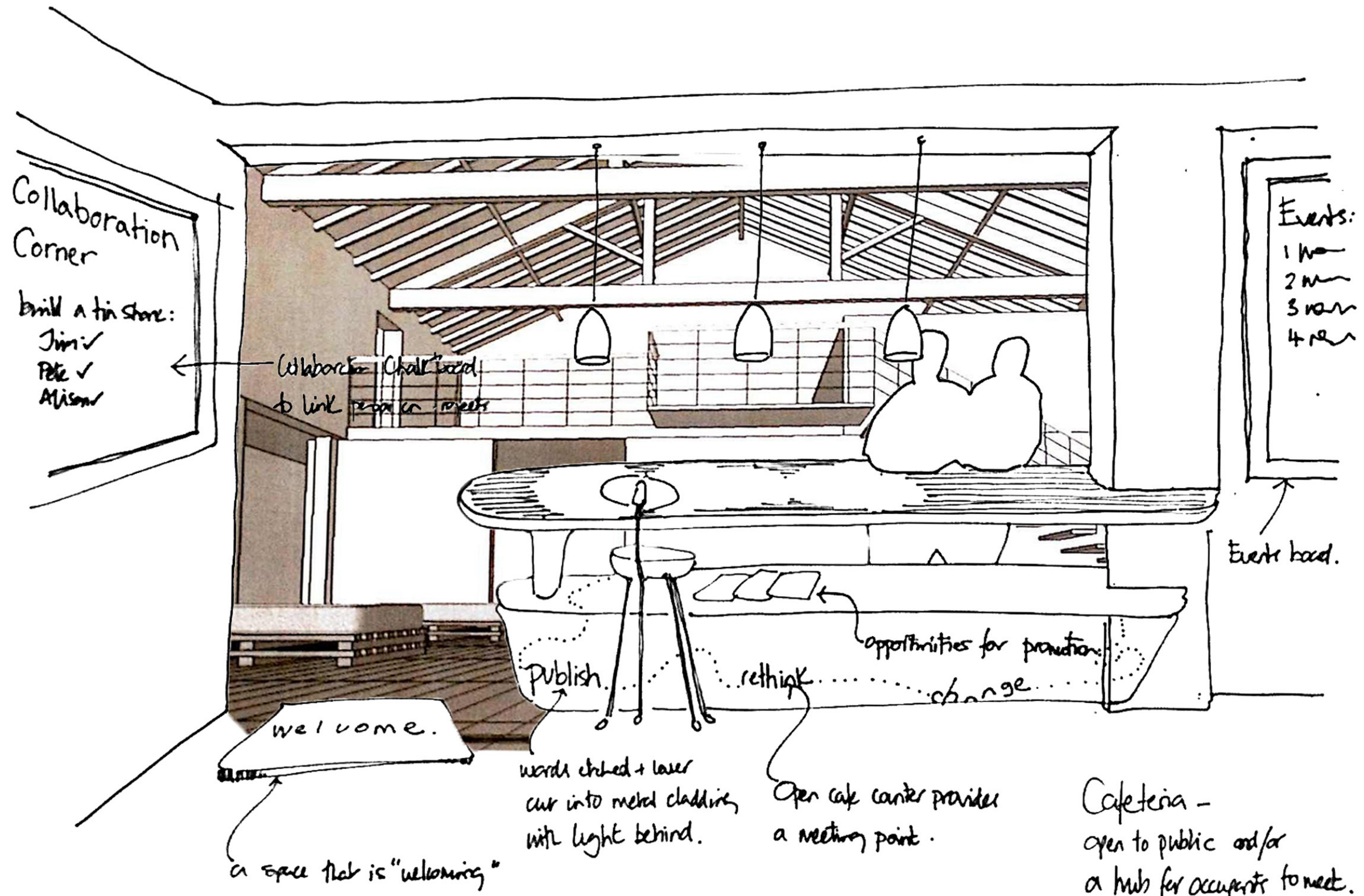




HALTON MILL: INTERIOR DESIGN PROJECT

PRESENTATION: INITIAL IDEAS 15 FEBRUARY 2013
GREEN ELEPHANT AND UCLAN MA DESIGN STUDENTS

KITCHEN/CAFE: INITIAL SKETCH





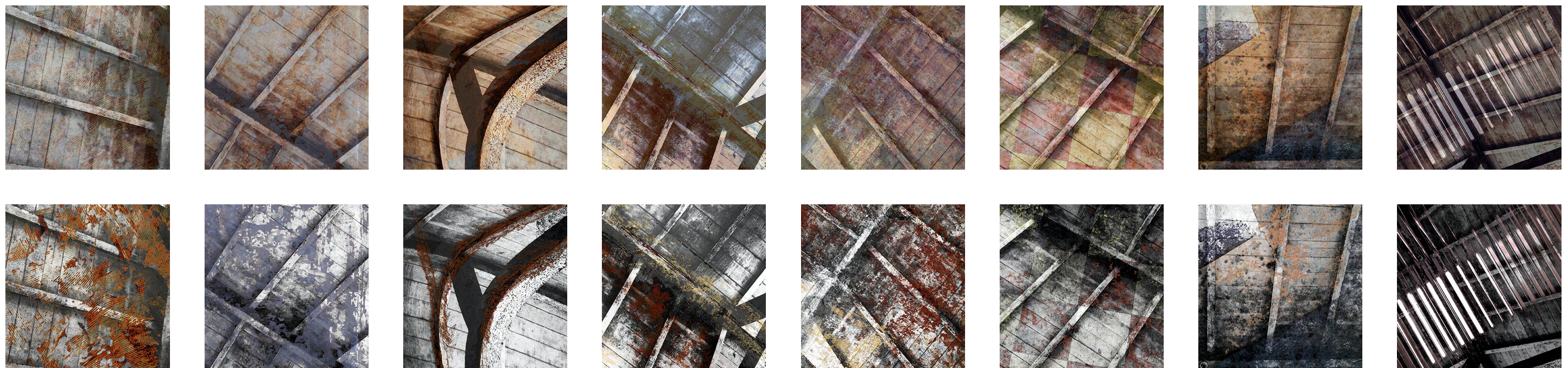
HALTON MILL: INTERIOR DESIGN PROJECT

PRESENTATION: INITIAL IDEAS 15 FEBRUARY 2013
GREEN ELEPHANT AND UCLAN MA DESIGN STUDENTS

SURFACE PATTERN



Source images (above): photos of textures and patterns found in the mill in its current state - echoes of the past and evidence of its history
Treated images to be used on surfaces and fabrics (below): taking the leaf-like shape of the roof beams and adding various patterns from around the building





HALTON MILL: INTERIOR DESIGN PROJECT

PRESENTATION: INITIAL IDEAS 15 FEBRUARY 2013
GREEN ELEPHANT AND UCLAN MA DESIGN STUDENTS

NEXT STEPS

TAKING THE PROJECT FORWARD

- » Apply the design concept throughout the building to different areas, for example:
 - » hot-desking area could take the industrial eco studio or creative lounge styles of the reception with draughtsman furniture, industrial lights, recycled crate furniture
 - » corridors could use the lighting, floor and wall style of reception
 - » various hotspots around the building could be used for informal meeting points with some pallet seating, mill print cushions and drop-in computers

ASPECTS TO CONSIDER FURTHER

- » Toilets
- » Heating and insulation
- » Define specific uses of various rooms to refine designs
- » Budget – Green Elephant have applied for an Innovation Voucher to fund further consultancy work.

